

SST



Shivam Technomech



MFG. OF -
HYDRAULIC SHEARING,
HYDRAULIC PRESS BRAKE,
HYDRAULIC 'C' TYPE PRESS,
HYDRAULIC 'H' TYPE PRESS
NC, CNC MODELS ARE AVAILABLE



HYDRAULIC PRESS BRAKE



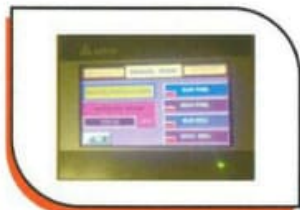
RANGE : 20 MT to 600 MT
LENGTH : 1250mm to 7000 mm

- ◆ The Stable robust welded steel frame made of ultrasonically tested IS 2062 plates as per guidelines of IMTMA Standards
- ◆ Fast approach & fast return speed to save cycle time. slow pressing speed for better stroke control & bending accuracy. ensures high productivity
- ◆ Compact cylinder & low pressure system due to rear cylinders
- ◆ Low power Consumption
- ◆ NC up gradation possible
- ◆ Moving work station with ON/OFF controls, Emergency push button & selector for Manual Better Safety for operator & Machine
- ◆ Low noise & smooth operation give higher efficiency of operator
- ◆ Better rigidity & load carrying capacity against fatigue failure
- ◆ Positive synchronisation of cylinders with welded torque tube
- ◆ Fine stroke adjustment rod with limit switch
- ◆ Manual back gauge with micro setting

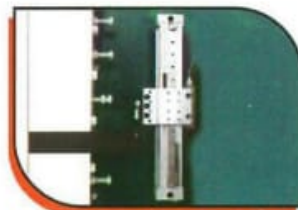
NC HYDRAULIC PRESS BRAKE

SALIENT FEATURES

- ◆ 4" Color touch screen LCD for easy data entry
- ◆ Repeatabile precise back gauge accuracy 0.1mm
- ◆ Quick change over for sample production & Mass production
- ◆ Two axis automatic control - bending degree (Y-Axis) & Back gauge (X - Axis) Program
- ◆ Manual, auto & program mode selection through screen
- ◆ Bend angle & depth mode selection thru screen
- ◆ 32 punch & die data Memory
- ◆ Alarm, Fault & status pages make easy trouble shooting
- ◆ Password protected screen menus to safeguard program access
- ◆ Stroke control and stroke counter on screen



Optional Cyb toch 6-touch screen two axis controller from cybele - data



Highly Precise 5 micron brake scale for Y-axis positioning



High-speed back gauge with AC servo Drive, Ball Screw, LM guides & Timer Belt



Optional hardened & grounded multi-vdie & punch with quick release clamps.

HYDRAULIC SHEARING MACHINE



RANGE : 2mm TO 32 mm
LENGTH : 1250mm to 7000mm

- ◆ Guillotine type Hydraulically variable rake angle design
- ◆ The stable robust ultrasonically tested IS 2062 grade welded structure
- ◆ Better Cutting accuracy in thin sheets at lower rake angle with twist free cuts
- ◆ Higher cutting capacity at higher rake angle
- ◆ NC up-gradation possible
- ◆ Hydraulic & Electrical Safety interlocks for overloading
- ◆ Rigid box type structure with inclined member for Ram & Table
- ◆ Better Safety for operator and machine
- ◆ Fast Production on smaller jobs
- ◆ Low noise & smooth operation gives higher efficiency of operator
- ◆ Pre-selector switch to adjust rake angle. fine stroke adjustment rod with limit switch Shadow light indicators.
- ◆ Four edge HCHCR/HCSR blade interchangeable.& suitable to shear mild & stainless steel

NC HYDRAULIC SHEARING MACHINE

- ◆ 4" Touch screen shear controller from cybelec / delta
- ◆ Multiple back-gauge position with stroke counting on screen
- ◆ Automatic Rake angle adjustment on screen
- ◆ User friendly colour LCD screen for easy Programming
- ◆ Automatic stroke length control on screen
- ◆ High-speed back gauge assembly with ball screw & timer belt
- ◆ Repeated position accuracy in 0.1mm
- ◆ AC Servo drive from Schneider / Panasonic from back gauge movement
- ◆ High accuracies are achieved via precision ball screw, L M guide, servo motor
- ◆ Longevity and low friction
- ◆ Selection of ' AUTO & MANUAL mode through screen



DELTA

DAC-310 - Delem



Back gauge Assembly with
 AC servo Drive Ball
 Screw & Timer Belt



HYDRAULIC IRON WORKER



- ◆ Hydraulic Iron Worker is designed to give an effective solution to all the cutting and punching problems of flat and section with satisfactory work quality from robust and compact machine
- ◆ Direct shearing avoids any waste of materials
- ◆ Five work station coppering '7' different operation International brands hydraulic & electrical components ensure trouble free operation
- ◆ Parallel operation of punching station with other workstation give higher productivity
- ◆ Unique Compact design by using ultrasonically Test steel plates

CAPACITY		MODEL - M	MODEL - H
Flat Shear	mm	150x16,250x12	150x25,250x20
Angle	mm	100x100x10	140x140x12
Channel	mm	100x50	150x75
Round	mm	∅ 32	∅ 40
Square Bar	mm	32	40
Punching	mm	∅ 40x8	∅ 40x12
Notching	mm	80x40x5	80x40x8

Engineering excellence with cost effective solution

- Angle Cutting ● Channel Cutting ● Flat cutting ● T-Section Cutting ● Round Bar Cutting
- Square Bar Cutting ● Punching ● Notching

HYDRAULIC C-FRAME PRESS



These presses are designed for various application like straitening Trimming, Punching, Embossing, bending & stamping applications. its unique design offer the flexibility & ease of operation as three side are open

- ◆ International quality hydraulic & electrical components to ensure long service life
- ◆ Hydraulic cylinders made of seamless hone tube & hard Chrome Plated rod. Latest technology PTFE seals with bronze guide tapes in hydraulic cylinders ensure long life
- ◆ C Frame Presses are available in various table sizes and throat depth designs to facilitate the various job requirements.
- ◆ Optional multiple speed for approach, Pressing & return Strokes Saves Cycle time .
- ◆ Suitable for jobs which need three side open area accessability

SST

Shivam Technomech

136,Abhishree Industrial Estate,B/H.,GVMM Odhav,G.I.D.C.,Ahmedabad,Gujarat,India

Email:rajesh2987@yahoo.com,mukesh13985@yahoo.com (M) 09638891603,09909941905